

# NetAlly® RealTime

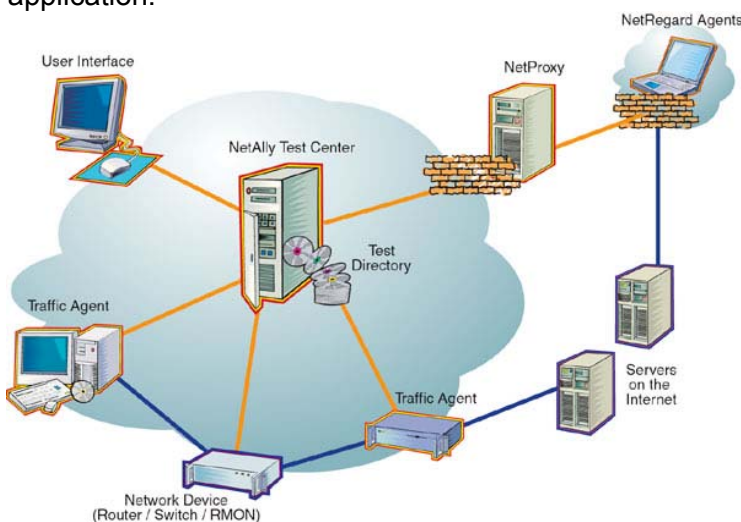
Performance Assessment, Assurance and Automated Diagnosis for Converged Networks

## Overview

NetAlly RealTime is a comprehensive network performance management solution that addresses the growing need for assuring an optimal fit between real-time applications and network performance. Its goal is to enable network managers to effectively assess, monitor and troubleshoot their converged networks.

This solution incorporates a breakthrough “holistic-network” methodology that dramatically improves the network professional’s ability to maintain reliable, high-performance converged networks and networked applications. This methodology, which utilizes active distributed network monitoring and testing, concentrates on the network-dependent performance of business-critical and real-time applications and services, and offers unprecedented facilities for rapidly isolating any source of impeded network function.

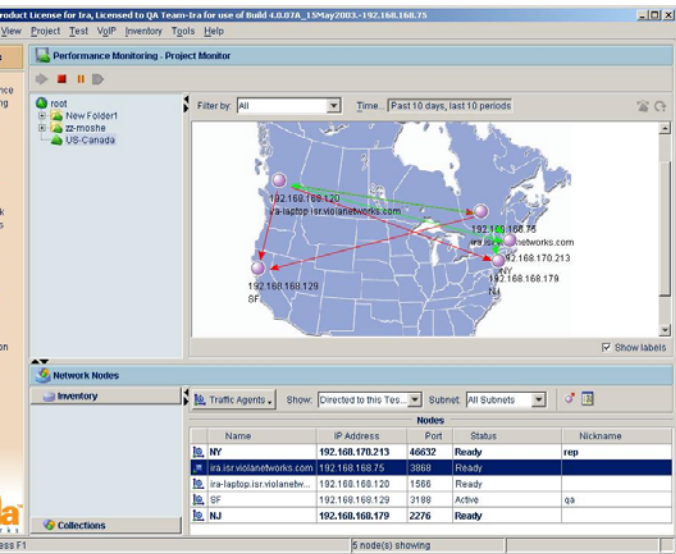
NetAlly RealTime leverages this unique technology to eliminate network-related doubts, to detect potential network problems before they affect end-users, to pinpoint the source of degraded network performance in record time, and to definitively determine whether a detected problem is rooted in the network or the application.



Sample NetAlly Deployment Architecture

## Benefits of NetAlly RealTime

- **Comprehensive performance assurance.** NetAlly RealTime provides complete and ongoing testing of the network and its applications and services, by actively generating emulated application traffic for communication between software-based Traffic Agents and with *actual* servers and applications in real-time, plus NetAlly RealTime adds the capability to simultaneously collect passive information from data generated and accumulated by network components, users and servers.
  - Preemptive discovery of network faults and performance anomalies – predict and fix problems before end users ever notice them.
  - User perspective of network behavior – active tests generate and evaluate data sent from the user’s desktop across the network.
  - On-demand network testing – real-time troubleshooting using actively-generated traffic.
  - Both pre- and post-deployment testing – especially for VoIP or IP Videoconferencing, including QoS.
- **Real-time verification to the end-user desktop.** Web-based NetRegard™ agents allow almost immediate performance testing to the end-user desktop without the time or expense needed to deploy physical resources or to install software.
  - NetRegard agents run inside Web browsers – painless end-to-end testing.
  - Very fast, pin-point performance fault isolation from server to network to end-user desktop.
- **Easy configuration and operation.** A user-friendly graphical user interface (GUI) and an extensive Test Directory supplied with NetAlly RealTime make it easy to start running actual tests within minutes of installing the system.
  - Using “collections,” the configuration of test nodes that participate in a project becomes very simple,



and additional test nodes will automatically join already running rules-based tests.

NetAlly RealTime's distinctive Web-based Traffic Agent allows any computer running a Java-enabled browser to serve as a Traffic Agent, thereby dramatically reducing the amount of time involved in many troubleshooting situations.

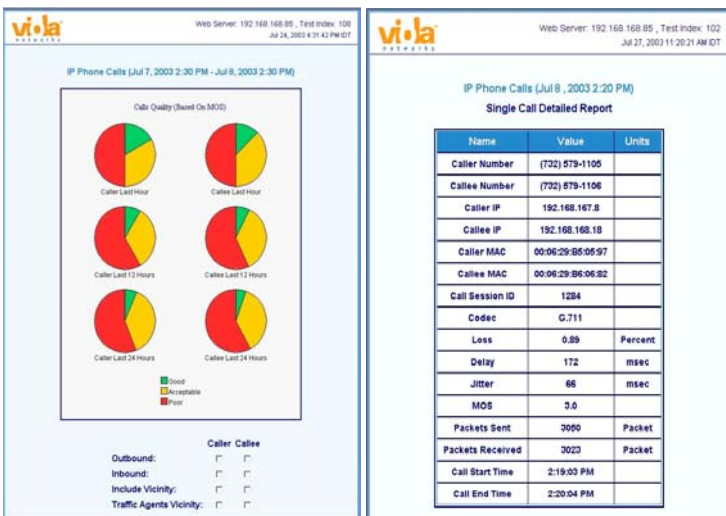
NetAlly's Agents send each other a wide variety of network traffic packets that are analyzed and used to generate network performance reports. Packets of a number of different application protocols may be generated, and packet parameters (such as packet size, frequency, and QoS level) may be customized.

NetAlly RealTime's particular ability to create actual network traffic provides important advantages:

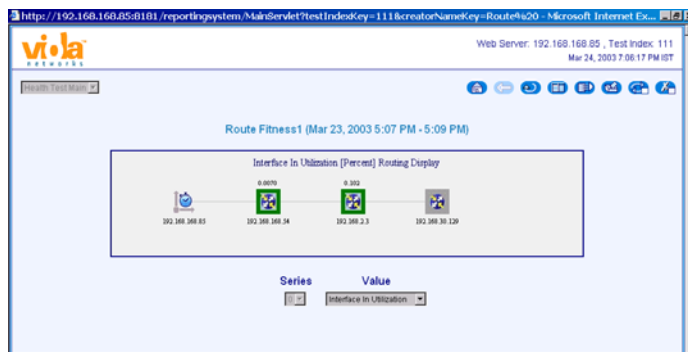
Powerful and flexible report generation, including Web browser access to all reports:

### Viewing a Monitoring Project Using the GUI

access to all reports:



- **Ongoing performance verification.** NetAlly RealTime continuously tracks and verifies the network's performance as it impacts on networked applications and services. This allows the network manager to increase company productivity through the early detection of potential network problems.
- **Drill-down troubleshooting capabilities.** On-demand generation of actual traffic allows the network manager to rapidly isolate the sources of network performance degradation, from the server to the end-user desktop.



### Technical Corner

NetAlly<sup>®</sup> RealTime is a sophisticated network performance verification system that uses a central Test Center to communicate with and control any number of software-based Traffic Agents and Cisco<sup>®</sup> SAAs located throughout the network or WAN.

**North America**  
(613) 592 2122  
1 800 648 3579

**Europe, Middle-East & Africa**  
Sales: 0870 9093030  
Int: +44 (0) 1291 430 000

**Latin America**  
(613) 592 2122  
1 800 648 3579

**Asia-Pacific**  
Tel: +852 2508 9780  
Fax: +852 2508 9232

www.mitel.com



THIS DOCUMENT IS PROVIDED TO YOU FOR INFORMATIONAL PURPOSES ONLY. The information furnished in this document, believed by Mitel to be accurate as of the date of its publication, is subject to change without notice. Mitel assumes no responsibility for any errors or omissions in this document and shall have no obligation to you as a result of having made this document available to you or based upon the information it contains.

M MITEL (design) is a registered trademark of Mitel Networks Corporation. All other products and services are the registered trademarks of their respective holders.